

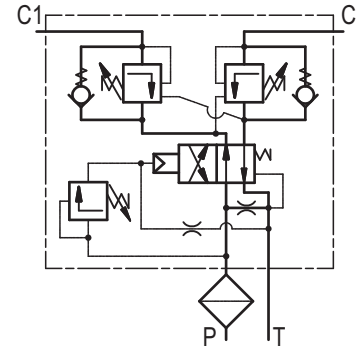
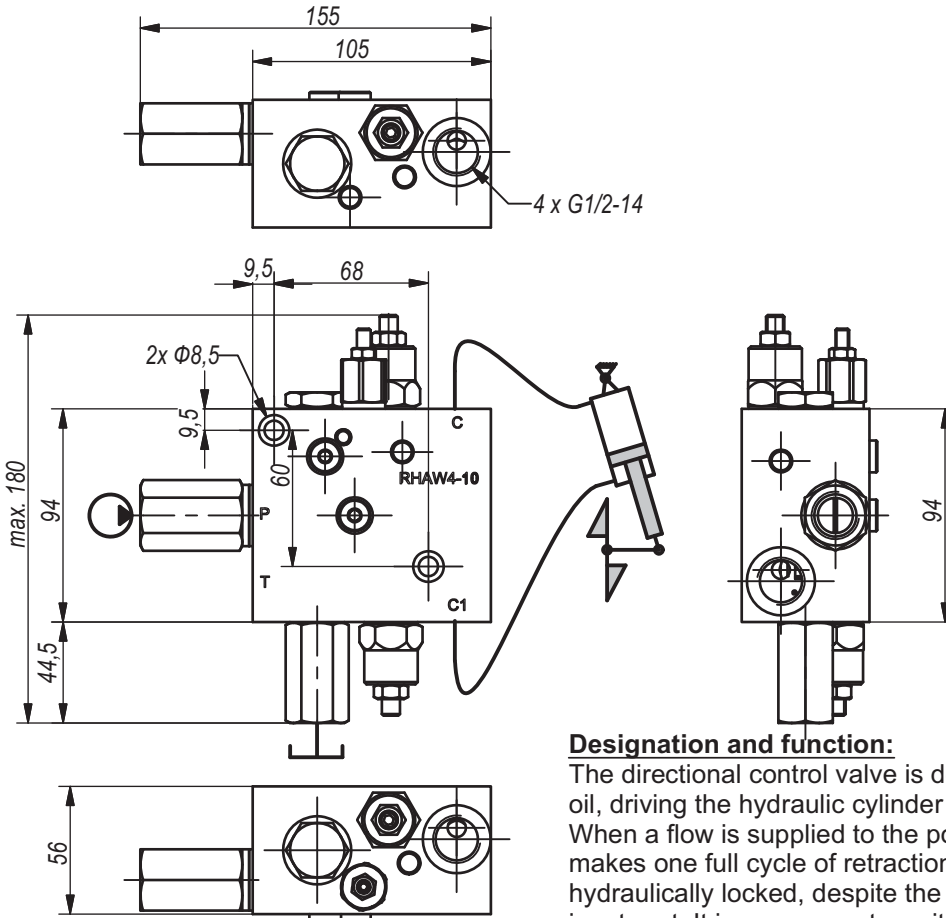
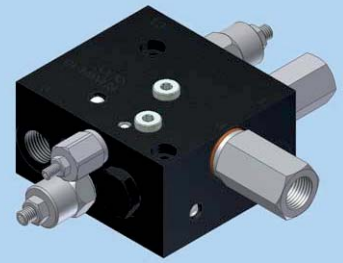


**Hidro
Pnevmo
Tehnika**

3, Vojeli St., Kazanlak, Bulgaria
Tel.: +359 431/ 62 228, 68 440
e-mail: info@hpt-bg.com
www.hpt-bg.com

HYDRAULIC DIRECTIONAL CONTROL VALVE WITH AUTOMATIC SWITCHING

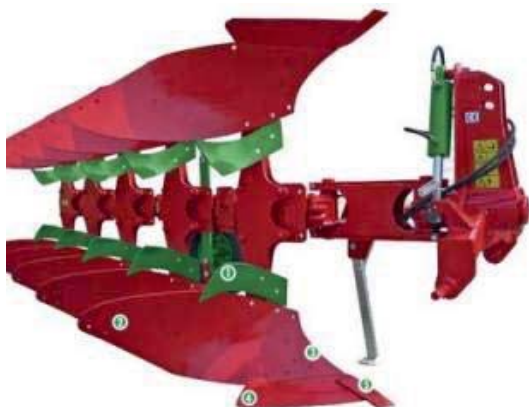
RHAW4-10



Designation and function:

The directional control valve is designed to control the flow of the oil, driving the hydraulic cylinder for turning a tractor-driven plough. When a flow is supplied to the port P of the block, the cylinder makes one full cycle of retraction and extension and keeps hydraulically locked, despite the fact that there is pressure at the input port. It is necessary to wait for 3-4 seconds after the supply of the flow stops, till the next action, in order to restore the position of the switching spool in the directional control valve. On the next flow supply the cycle repeats itself.

Note: All performances and calibration are carried out by using hydraulic oil with viscosity approx 46 cSt at 50 °C



TECHNICAL DATA

General		
Ambient temperature	°C	-20...+50
Hydraulic		
Maximal pressure	bar	200
Supply flow range	L/min	10...50
Control range of the switching pressure	bar	50...200
Adj. pressure range overcenter valve (pos. 1)	bar	100...250
Working fluid - mineral oil		
- viscosity	mm ² /s	10...100
- filtration level	mm	25 or better
- temperature	°C	-20...+80

ORDERING CODE

RHAW4-10

Type