



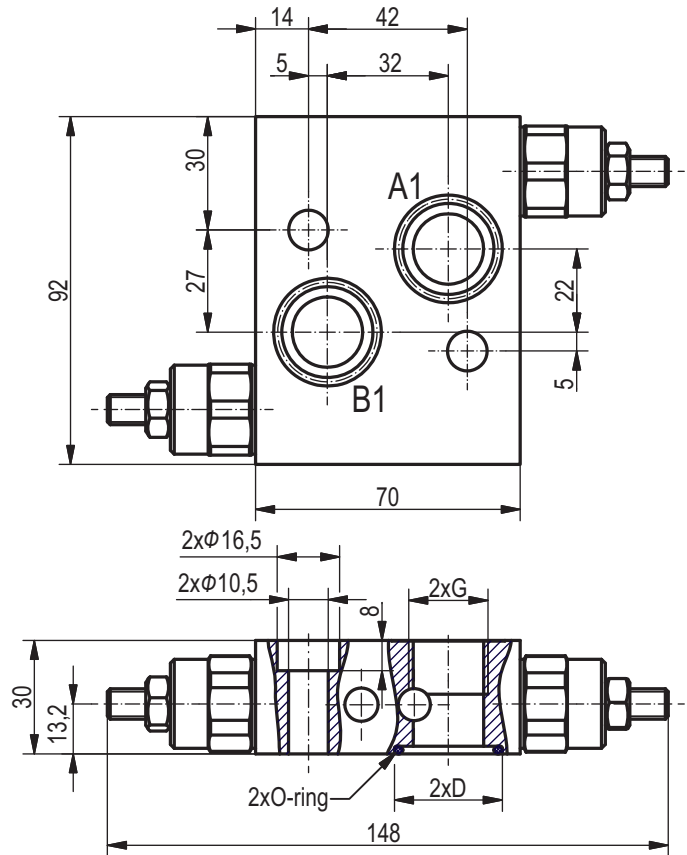
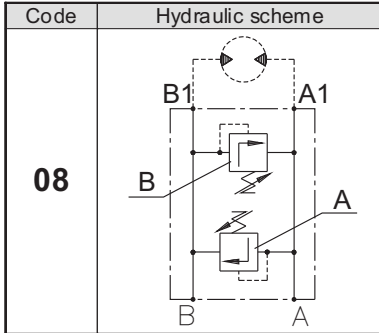
**Hidro
Pnevmo
Tehnika**

3, Vojeli St., Kazanlak, Bulgaria
Tel.: +359 431/62 228
Fax.: +359 431/62 019
e-mail: info@hpt-bg.com
www.hpt-bg.com

HYDRAULIC MOTOR BLOCKS TYPE BV

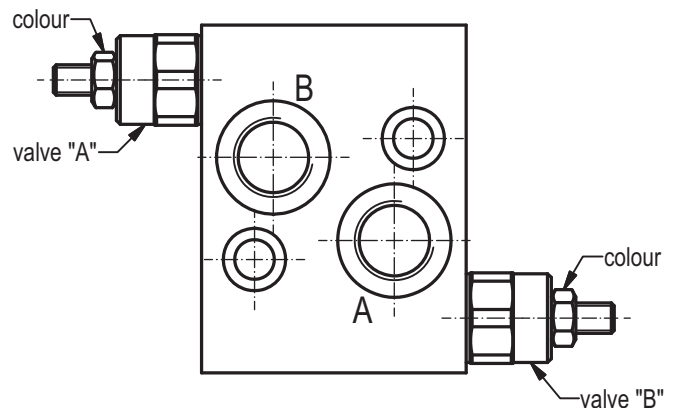


BVS .. 08../... ..-1



Pressure range			
Code	Standard setting (Q=5l/min)	Adj. pressure range	Colour
	bar	bar	
10	80	10...100	White
25	180	30...250	Yellow

Code	Adjustment
A	Leakproof hex. socket screw
B	Handknob and locknut
C	Sealing cap



Type	Nom. flow rate	P _{max.}	Port threads G	D	O-ring
	L/min	bar	-	mm	-
BVS 1208 /... ..-1	60	250	G1/2 - DIN 3852	28,5	23,6x2,65
BVS 7808 /... ..-1	60	250	7/8-14UNF - ISO 1192	29,3	26x2
BVS 2208 /... ..-1	60	250	M22x1,5 - DIN 3852	28,5	23,6x2,65

ORDERING CODE

BV S 12 08 / A10 A - B25 A - 1

Modification

Type

Hydraulic motor type - code:
MS - **S**

Port threads G - code
G1/2 - **12**
7/8-14 UNF - **78**
M22x1,5 - **22**

Scheme code:
08

Adjustment code:
A; B; C
(see table above)

Pressure range code
valve "A":
10; 25

Adjustment code:
A; B; C
(see table above)

Pressure range code
valve "B":
10; 25