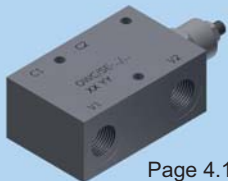
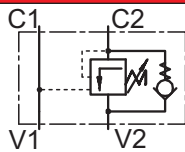
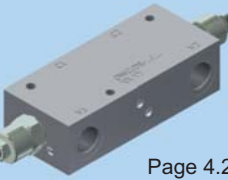
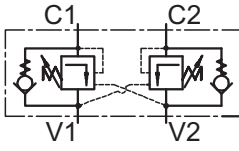

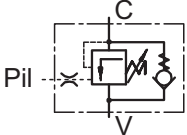

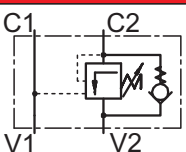

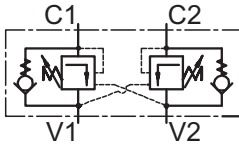
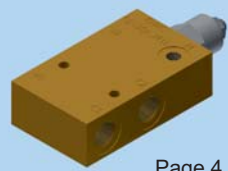
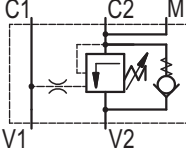
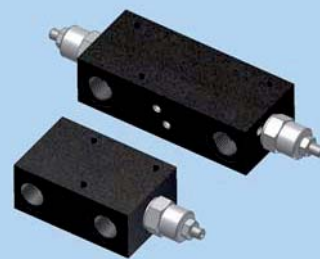




## OVERCENTER VALVES

 Page 4.1	<b>OWC/SE-../..</b> 
 Page 4.2	<b>OWC/DE-../..</b> 
 Page 4.3	<b>OWC/SE-38/..M</b> 

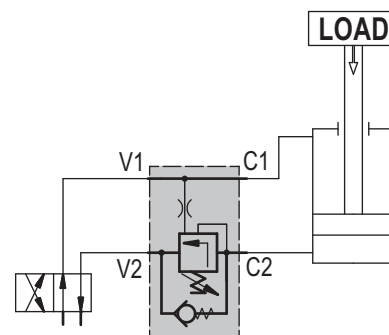
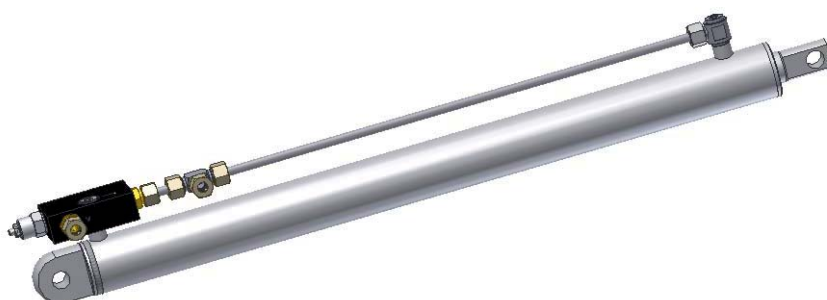
 Page 4.4	<b>OWC/SE-34/..</b> 
 Page 4.5	<b>OWC/DE-34/..</b> 
 Page 4.6	<b>OWC/SE-38/..ML</b> 



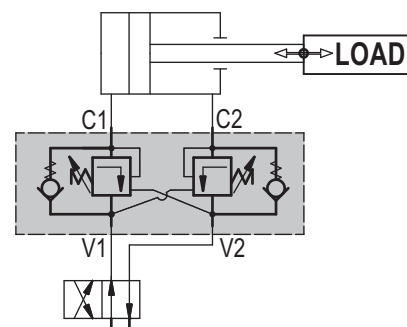
The overcenter valves are used for a precise control of the movement based on the supplied flow. In the case when an external force is acting on the operating unit (a cylinder or a hydraulic motor), and the result of that action increases the speed of movement over the value determined by the input flow, the valve "reduces" the output flow of the cylinder/hydraulic motor and prevents from rise of the speed and protects the system from cavitation.

Examples of connections are given below:

#### 1. Of a single valve



#### 2. Of a double valve



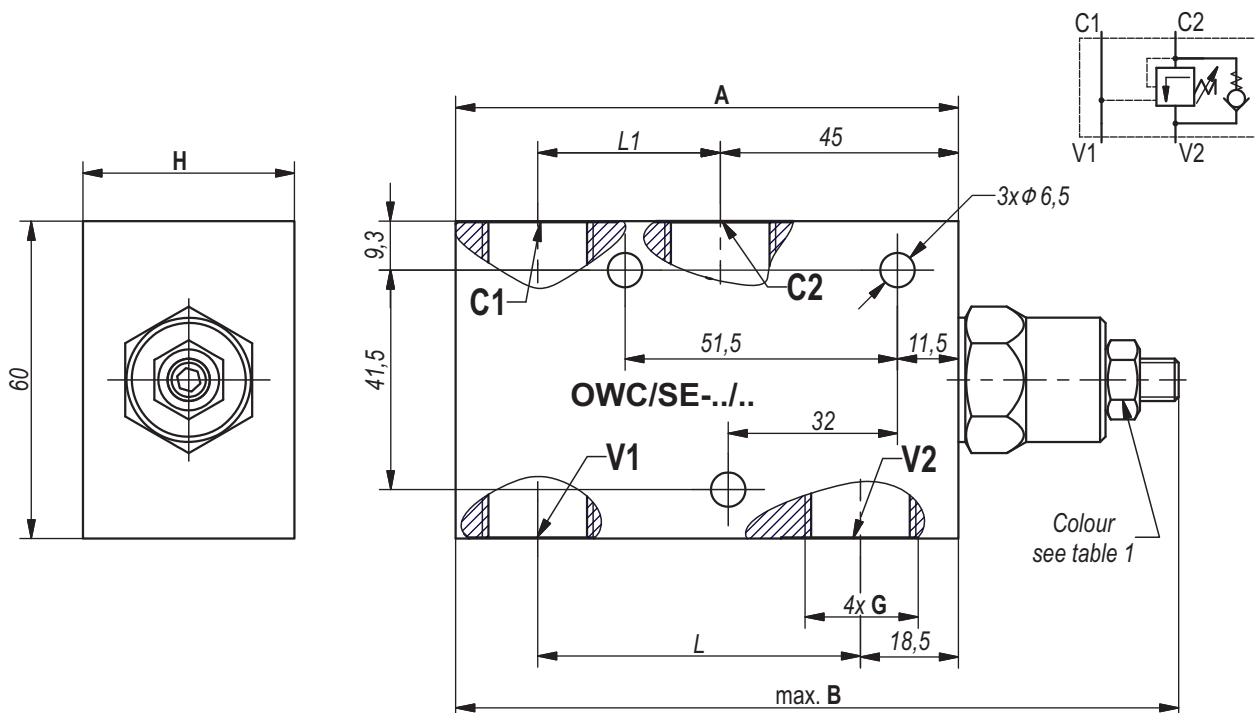
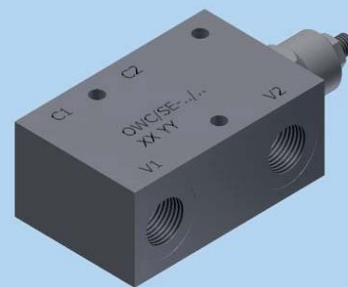


**Hidro  
Pnevmo  
Tehnika**

3, Vojeli St., Kazanlak, Bulgaria  
Tel.: +359 431/ 62 228, 68 440  
e-mail : info@hpt-bg.com  
www.hpt-bg.com

## IN-LINE SINGLE OVERCENTER VALVE

**OWC/SE-../..**



**Table 1**

Code	Pressure range			
	Standard setting (Q=5l/min) bar	Adj. pressure range bar	Pilot ratio	Colour
25	100	60...250	4,26:1	White
35	250	100...350	4,26:1	Yellow

All performances and calibration are carried out by using hydraulic oil with viscosity approx. 46 cSt at 50°C.

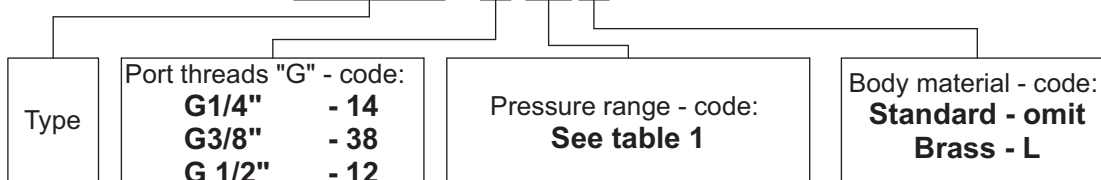
Working fluid - mineral oil with:  
- viscosity - 10...100 cSt;  
- temperature - -20...+80°C;  
- filtration level - 25 μm.

**Table 2**

Type	Q nom.	A	B	G	L	L1	H	Body material
	L/min.	mm	mm	-	mm	mm	mm	-
OWC/SE-14/25	30	90	135	G 1/4"-DIN 3852	58,5	32	30	Aluminum
OWC/SE-38/25	35	90	135	G 3/8"-DIN 3852	58,5	32	30	Aluminum
OWC/SE-12/25	50	95	140	G 1/2"-DIN 3852	61	34,5	40	Aluminum
OWC/SE-14/35	30	90	135	G 1/4"-DIN 3852	58,5	32	30	Steel
OWC/SE-38/35	35	90	135	G 3/8"-DIN 3852	58,5	32	30	Steel
OWC/SE-12/35	50	95	140	G 1/2"-DIN 3852	61	34,5	30	Steel
OWC/SE-14/25L	30	90	135	G 1/4"-DIN 3852	58,5	32	30	Brass
OWC/SE-14/35L	30	90	135	G 1/4"-DIN 3852	58,5	32	30	Brass
OWC/SE-38/25L	35	90	135	G 3/8"-DIN 3852	58,5	32	30	Brass
OWC/SE-38/35L	35	90	135	G 3/8"-DIN 3852	58,5	32	30	Brass
OWC/SE-12/25L	50	95	140	G 3/2"-DIN 3852	61	34,5	40	Brass
OWC/SE-12/35L	50	95	140	G 3/2"-DIN 3852	61	34,5	40	Brass

### ORDERING CODE

**OWC/SE - 38/25 L**





**Hidro  
Pnevmo  
Tehnika**

3, Vojeli St., Kazanlak, Bulgaria  
Tel.: +359 431/ 62 228, 68 440  
e-mail: info@hpt-bg.com  
www.hpt-bg.com

## IN-LINE DUAL OVERCENTER VALVE

**OWC/DE-../..**

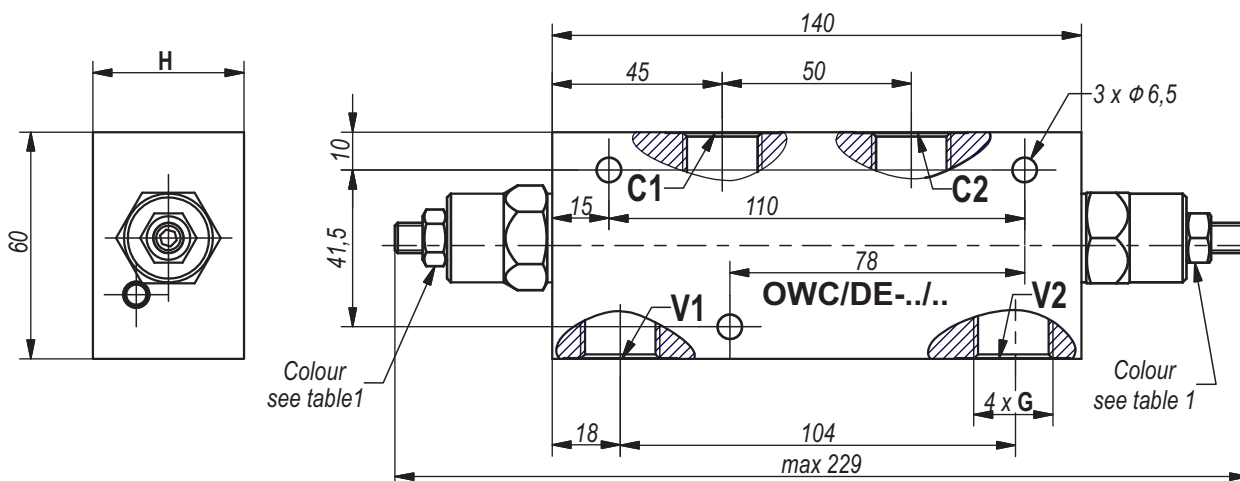
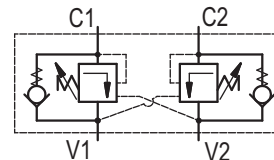
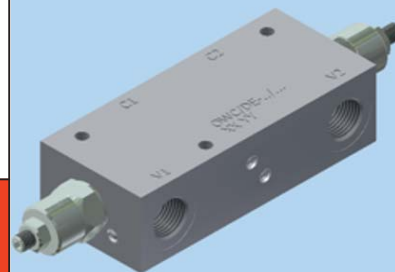


Table 1

Code	Pressure range		Pilot ratio	Colour
	Standard setting (Q=5l/min) bar	Adj. pressure range bar		
25	100	60...250	4,26:1	White
35	250	100...350	4,26:1	Yellow

Table 2

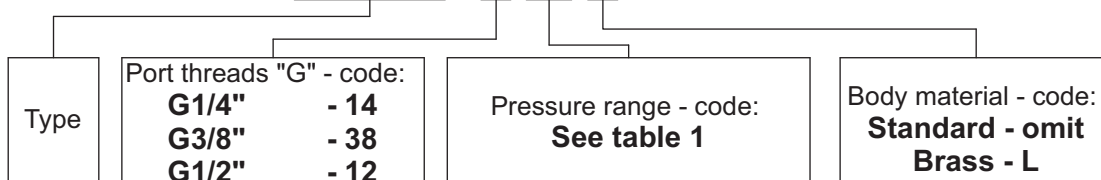
Type	Q nom.	G	H	Body material
	L/m in.			
OWC/DE-14/25	30	G 1/4"-DIN 38 52	30	Aluminum
OWC/DE-38/25	35	G 3/8"-DIN 38 52	30	Aluminum
OWC/DE-12/25	50	G 1/2"-DIN 38 52	40	Aluminum
OWC/DE-14/35	30	G 1/4"-DIN 38 52	30	Steel
OWC/DE-38/35	35	G 3/8"-DIN 38 52	30	Steel
OWC/DE-12/35	50	G 1/2"-DIN 38 52	30	Steel
OWC/DE-14/25 L	30	G 1/4"-DIN 38 52	30	Brass
OWC/DE-14/35 L	30	G 1/4"-DIN 38 52	30	Brass
OWC/DE-38/25 L	35	G 3/8"-DIN 38 52	30	Brass
OWC/DE-38/35 L	35	G 3/8"-DIN 38 52	30	Brass
OWC/DE-12/25 L	50	G 1/2"-DIN 38 52	40	Brass
OWC/DE-12/35 L	50	G 1/2"-DIN 38 52	40	Brass

All performances and calibration are carried out by using hydraulic oil with viscosity approx. 46 cSt at 50°C.

**Working fluid** - mineral oil with:  
- viscosity - 10...100 cSt;  
- temperature - -20...+80°C;  
- filtration level - 25 μm.

### ORDERING CODE

#### OWC/DE - 38/25 L





**Hidro  
Pnevmo  
Tehnika**

3, Vojeli St., Kazanlak, Bulgaria  
Tel.: +359 431/ 62 228, 68 440  
e-mail: info@hpt-bg.com  
www.hpt-bg.com

**SINGLE OVERCENTER VALVE  
WITH EXTERNAL PILOT-  
NIPPLE SCREW FLANGEABLE**

**OWC/SE-38/..M**

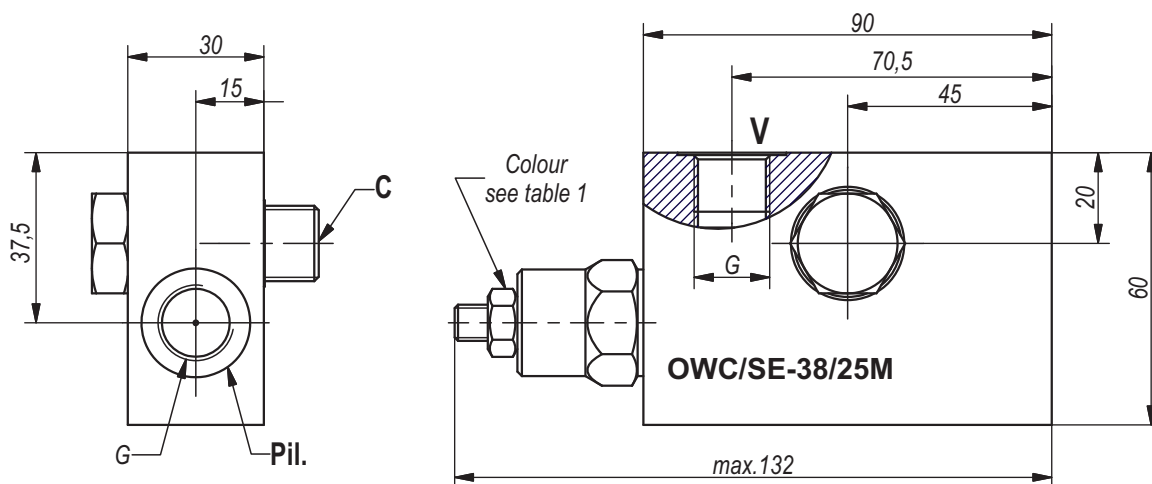
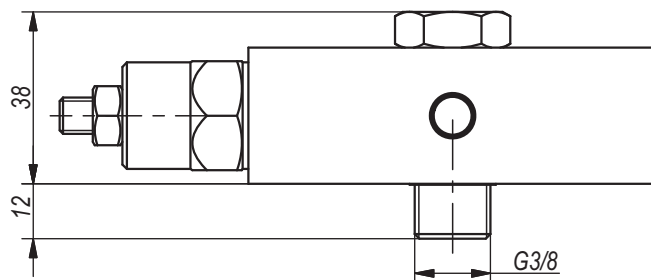
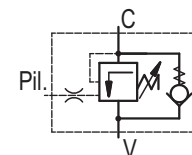
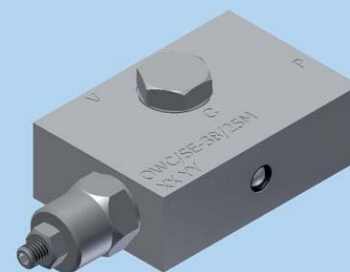


Table 1

Code	Pressure range		Pilot ratio	Colour
	Standard setting (Q=5l/min) bar	Adj. pressure range bar		
25	100	60...250	4,26:1	White
35	250	100...350	4,26:1	Yellow

Table 2

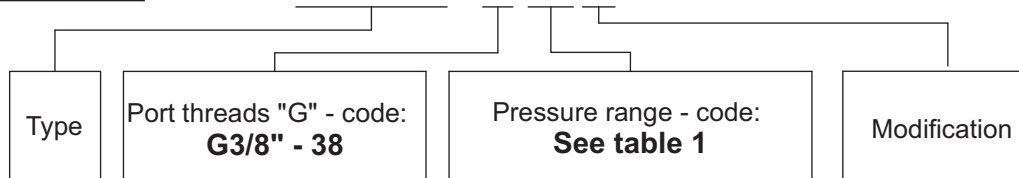
Type	Q nom.	G	Body material
	L/min.		
OWC/SE-38/25M	35	G3/8"-DIN 3852	Aluminium
OWC/SE-38/35M	35	G3/8"-DIN 3852	Steel

All performances and calibration are carried out by using hydraulic oil with viscosity approx. 46 cSt at 50°C.

**Working fluid** - mineral oil with:  
- viscosity - 10...100 cSt;  
- temperature - -20...+80°C;  
- filtration level - 25 μm.

**ORDERING CODE**

**OWC/SE - 38/25 M**





**Hidro  
Pnevmo  
Tehnika**

3, Vojeli St., Kazanlak, Bulgaria  
Tel.: +359 431/ 62 228, 68 440  
e-mail : info@hpt-bg.com  
www.hpt-bg.com

## IN-LINE SINGLE OVERCENTER VALVE

**OWC/SE- 34/.. .**

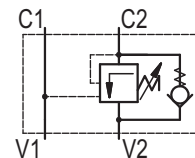
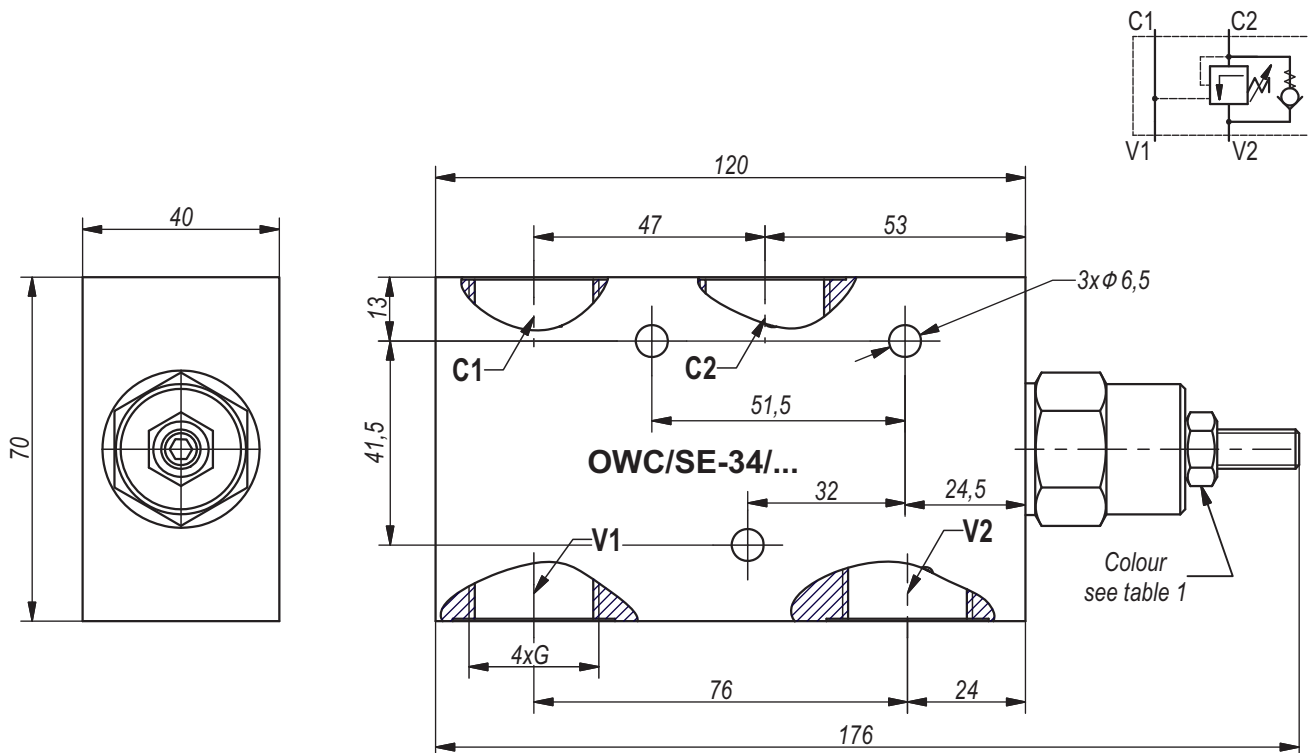
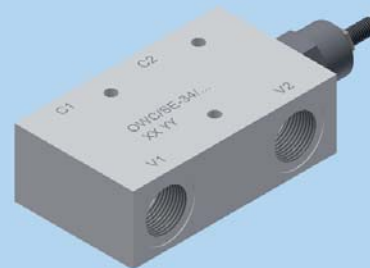


Table 1

Code	Pressure range		Pilot ratio	Colour
	Standard setting (Q=5l/min) bar	Adj. pressure range bar		
25	100	60...250	4,26:1	White
35	250	100...350	4,26:1	Yellow

Table 2

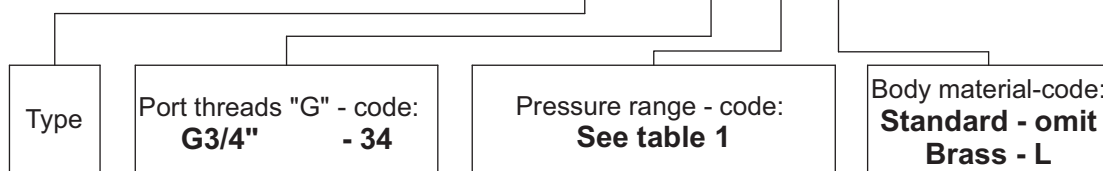
Type	Q <sub>nom.</sub>	G	H	Body material
	L/min.			
OWC/SE-34/25	100	G3/4"-DIN 3852	40	Aluminum
OWC/SE-34/25L	100	G3/4"-DIN 3852	40	Brass
OWC/SE-34/35	100	G3/4"-DIN 3852	35	Steel

All performances and calibration are carried out by using hydraulic oil with viscosity approx. 46 cSt at 50°C.

**Working fluid** - mineral oil with:  
- viscosity - 10...100 cSt;  
- temperature - -20...+80°C;  
- filtration level - 25 μm.

### ORDERING CODE

**OWC/SE - 34 / 25 L**



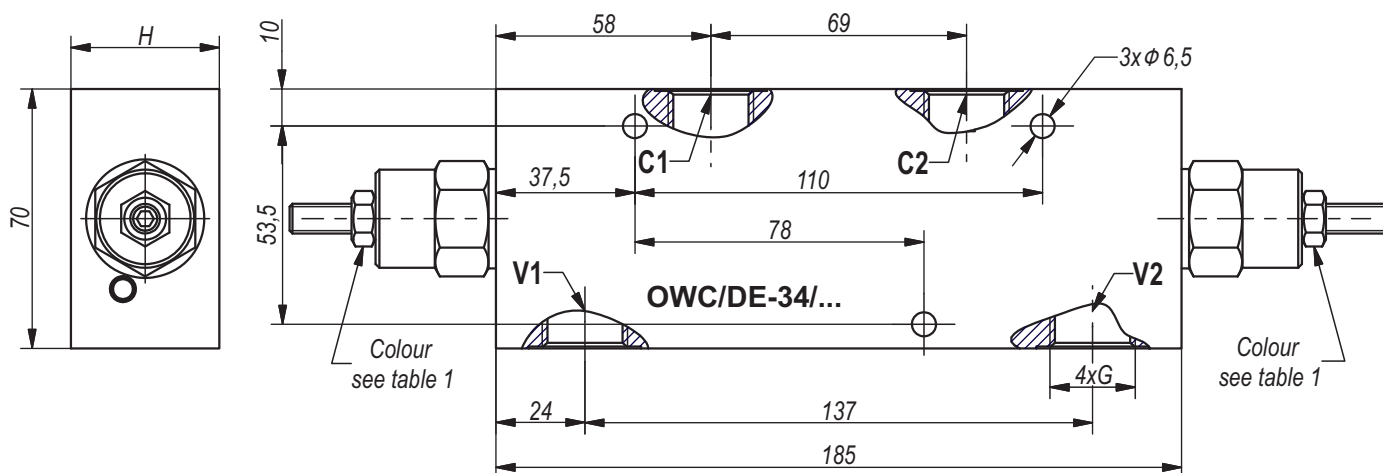
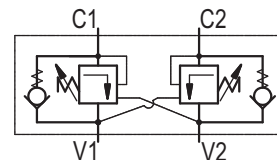


Table 1

Code	Pressure range		Pilot ratio	Colour
	Standard setting (Q=5l/min) bar	Adj. pressure range bar		
25	100	60...250	4,26:1	White
35	250	100...350	4,26:1	Yellow

Table 2

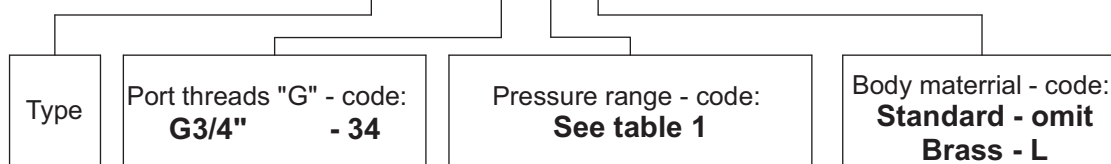
Type	Q <sub>nom.</sub>	G	H	Body material
	L/min.			
OWC/DE-34/25	100	G3/4"-DIN 3852	40	Aluminum
OWC/DE-34/25L	100	G3/4"-DIN 3852	40	Brass
OWC/DE-34/35	100	G3/4"-DIN 3852	35	Steel

All performances and calibration are carried out by using hydraulic oil with viscosity approx. 46 cSt at 50°C.

**Working fluid** - mineral oil with:  
 - viscosity - 10...100 cSt;  
 - temperature - -20...+80°C;  
 - filtration level - 25 μm.

**ORDERING CODE**

**OWC/DE - 34/25 L**





**Hidro  
Pnevmo  
Tehnika**

3, Vojeli St., Kazanlak, Bulgaria  
Tel.: +359 431/ 62 228, 68 440  
e-mail : info@hpt-bg.com  
www.hpt-bg.com

## IN-LINE SINGLE OVERCENTER VALVE

### OWC/SE- 38/..M1L

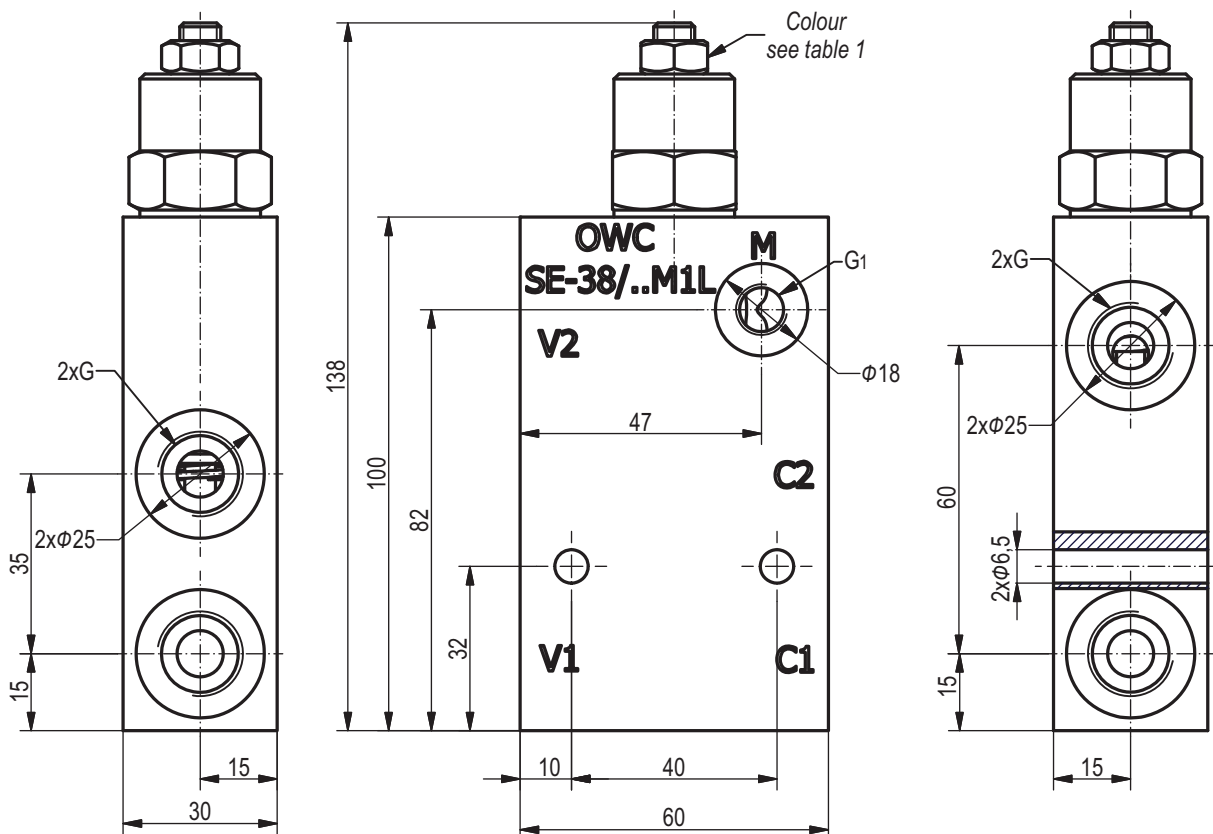
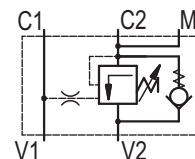
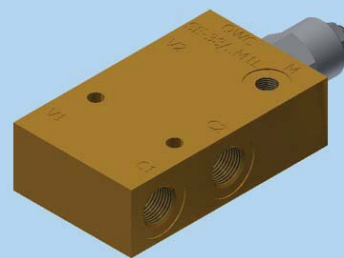


Table 1

Pressure range				
Code	Standard setting (Q=5l/min)	Adj. pressure range	Pilot ratio	Colour
	bar	bar	-	-
25	100	60...250	4,26:1	White
35	250	100...350	4,26:1	Yellow

Table 2

Type	Q <sub>nom.</sub>	G	G <sub>1</sub>	Body material
	L/min.	-	-	-
OWC/SE-38/25M1L	30	G3/8"-DIN 3852	G 1/8"-DIN 3852	Brass
OWC/SE-38/35M1L	30	G3/8"-DIN 3852	G 1/8"-DIN 3852	Brass

All performances and calibration are carried out by using hydraulic oil with viscosity approx. 46 cSt at 50°C.

**Working fluid** - mineral oil with:  
 - viscosity - 10...100 cSt;  
 - temperature - -20...+80°C;  
 - filtration level - 25 μm.

## ORDERING CODE

**OWC/SE - 38 / 25 M1 L**

