

IN-LINE DUAL OVERCENTER VALVE

OWC/DE-34/..

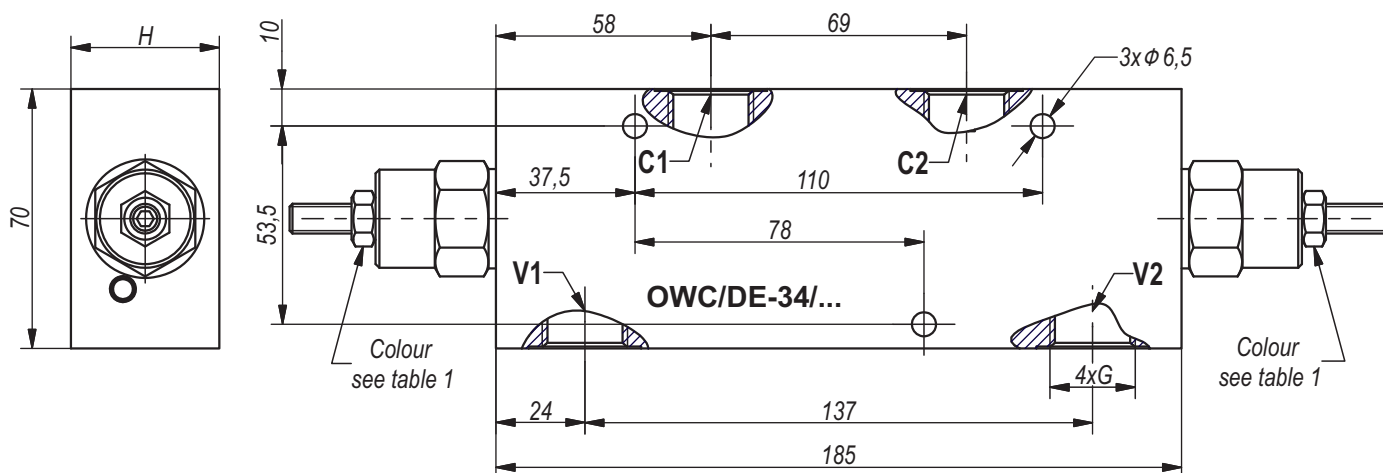
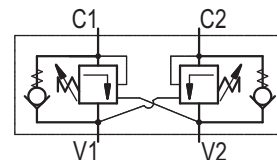


Table 1

| Code | Pressure range | | Pilot ratio | Colour |
|------|------------------------------------|----------------------------|-------------|--------|
| | Standard setting (Q=5l/min) bar | Adj. pressure range bar | | |
| 25 | 100 | 60...250 | 4,26:1 | White |
| 35 | 250 | 100...350 | 4,26:1 | Yellow |

Table 2

| Type | Q _{nom.} | G | H | Body material |
|---------------|-------------------|----------------|----|---------------|
| | L/min. | | | |
| OWC/DE-34/25 | 100 | G3/4"-DIN 3852 | 40 | Aluminum |
| OWC/DE-34/25L | 100 | G3/4"-DIN 3852 | 40 | Brass |
| OWC/DE-34/35 | 100 | G3/4"-DIN 3852 | 35 | Steel |

All performances and calibration are carried out by using hydraulic oil with viscosity approx. 46 cSt at 50°C.

Working fluid - mineral oil with:
 - viscosity - 10...100 cSt;
 - temperature - -20...+80°C;
 - filtration level - 25 μm.

ORDERING CODE

OWC/DE - 34/25 L

