



**Hidro
Pnevmo
Tehnika**

3, Vojeli St., Kazanlak, Bulgaria
Tel.: +359 431/ 62 228, 68 440
e-mail : info@hpt-bg.com
www.hpt-bg.com

IN-LINE SINGLE OVERCENTER VALVE

OWC/SE-../..

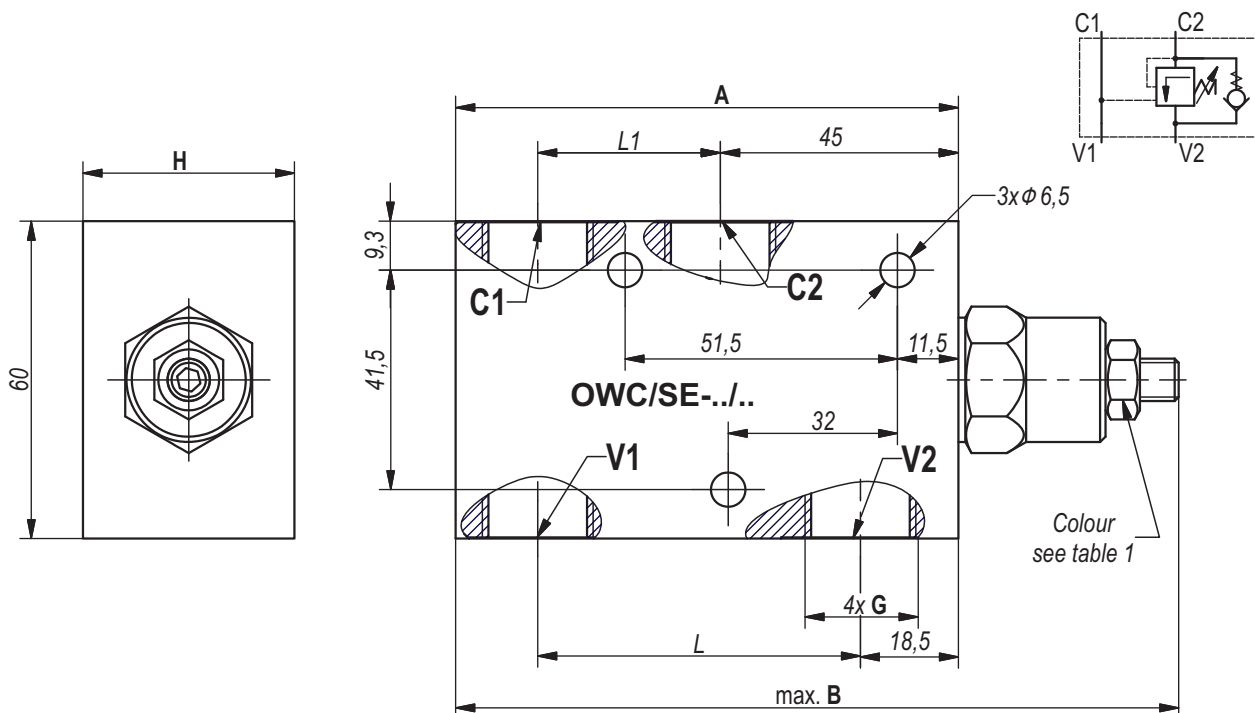
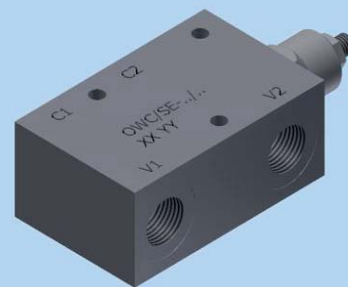


Table 1

Code	Pressure range			
	Standard setting (Q=5l/min) bar	Adj. pressure range bar	Pilot ratio	Colour
25	100	60...250	4,26:1	White
35	250	100...350	4,26:1	Yellow

All performances and calibration are carried out by using hydraulic oil with viscosity approx. 46 cSt at 50°C.

Working fluid - mineral oil with:
- viscosity - 10...100 cSt;
- temperature - -20...+80°C;
- filtration level - 25 μm.

Table 2

Type	Q nom.	A	B	G	L	L1	H	Body material
	L/min.	mm	mm	-	mm	mm	mm	-
OWC/SE-14/25	30	90	135	G 1/4"-DIN 3852	58,5	32	30	Aluminum
OWC/SE-38/25	35	90	135	G 3/8"-DIN 3852	58,5	32	30	Aluminum
OWC/SE-12/25	50	95	140	G 1/2"-DIN 3852	61	34,5	40	Aluminum
OWC/SE-14/35	30	90	135	G 1/4"-DIN 3852	58,5	32	30	Steel
OWC/SE-38/35	35	90	135	G 3/8"-DIN 3852	58,5	32	30	Steel
OWC/SE-12/35	50	95	140	G 1/2"-DIN 3852	61	34,5	30	Steel
OWC/SE-14/25L	30	90	135	G 1/4"-DIN 3852	58,5	32	30	Brass
OWC/SE-14/35L	30	90	135	G 1/4"-DIN 3852	58,5	32	30	Brass
OWC/SE-38/25L	35	90	135	G 3/8"-DIN 3852	58,5	32	30	Brass
OWC/SE-38/35L	35	90	135	G 3/8"-DIN 3852	58,5	32	30	Brass
OWC/SE-12/25L	50	95	140	G 3/2"-DIN 3852	61	34,5	40	Brass
OWC/SE-12/35L	50	95	140	G 3/2"-DIN 3852	61	34,5	40	Brass

ORDERING CODE

OWC/SE - 38/25 L

