

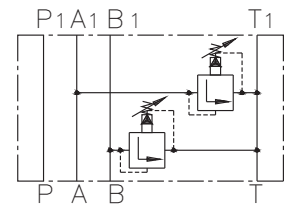
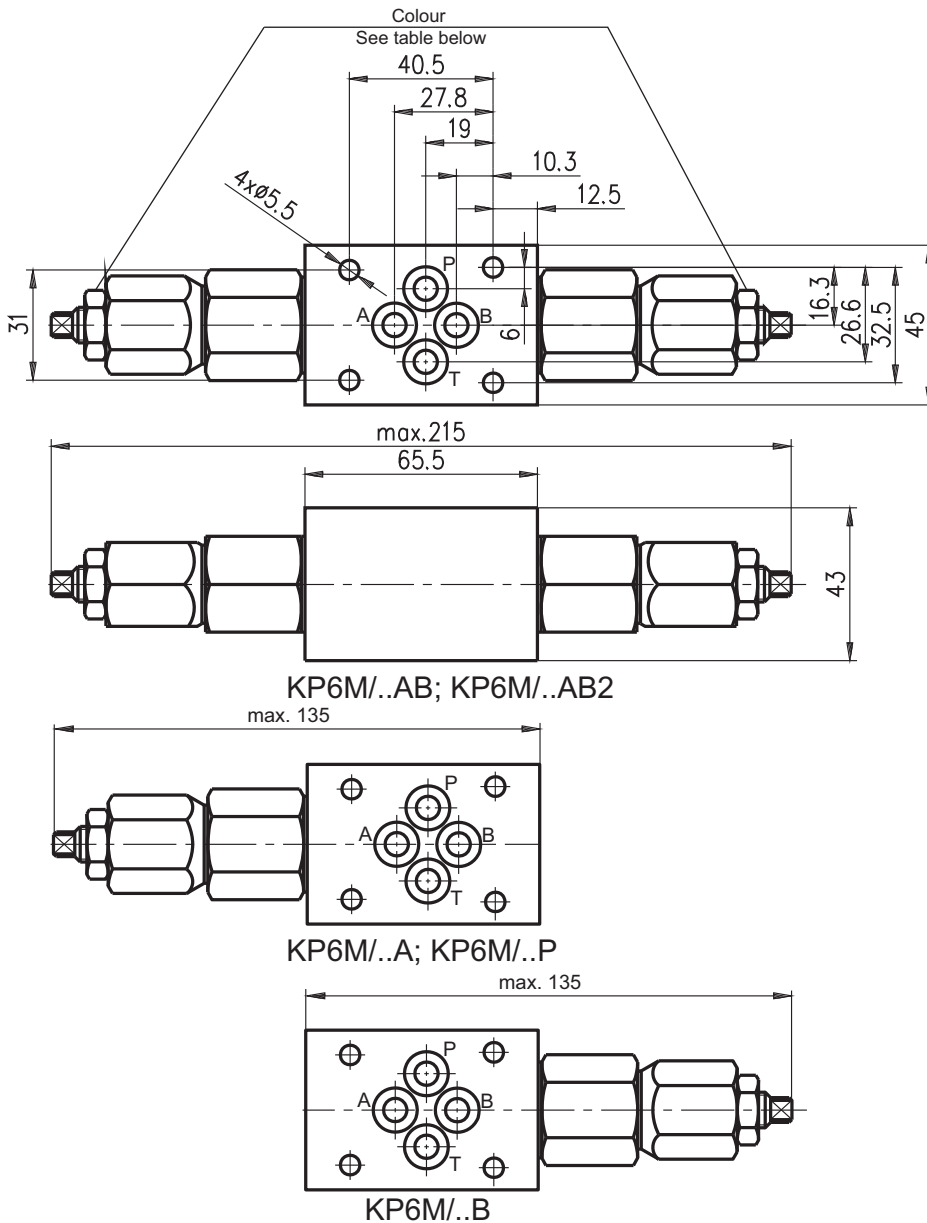
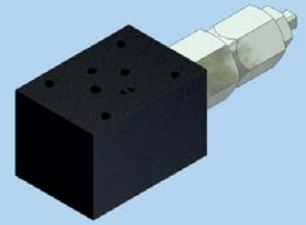


**Hidro  
Pnevmo  
Tehnika**

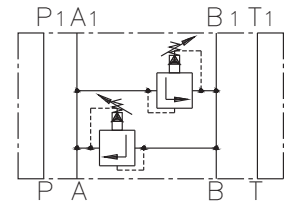
3, Vojeli St., Kazanlak, Bulgaria  
Tel.: +359 431/ 62 228, 68 440  
e-mail: info@hpt-bg.com  
www.hpt-bg.com

## RELIEF VALVE

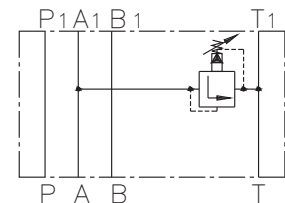
**KP6M / ...**



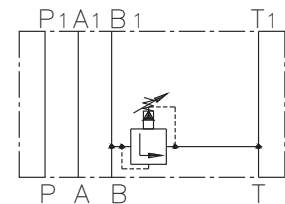
**KP6M/..AB**



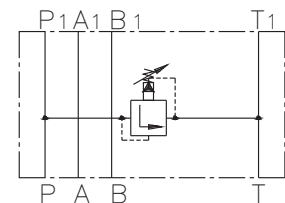
**KP6M/..AB2**



**KP6M/..A**



**KP6M/..B**



**KP6M/..P**

Type	P <sub>max.</sub> bar	Q <sub>nom.</sub> L/min
KP6M/..	320	20

Code	Pressure range		Colour
	Adj. pressure range bar	Standard setting (Q=5 L/min) bar	
10	5...100	80	White
20	15...200	180	Yellow
32	20...320	250	Black

**Note:** 1. All performances and calibrations are carried out by using hydraulic oil with viscosity approx. 46 cSt at 50°C  
2. Working fluid: Viscosity - 10...100 mm<sup>2</sup>/s. Temperature range:-20°C...+80°C. Filtration absolute: 25 µm.

### ORDERING CODE

**KP6M /32 AB**

Type

Pressure range code: **10,20,32**

Valve location - code:  
at line A to T - **A**  
at line B to T - **B**  
at line P to T - **P**  
at lines A to T and B to T - **AB**  
at lines A to B and B to A - **AB2**