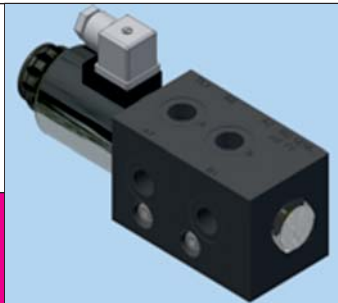




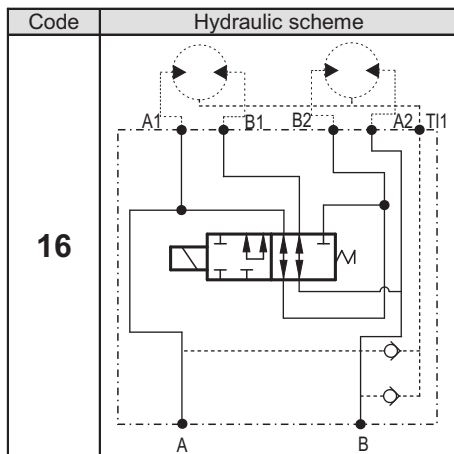
**Hidro
Pnevmo
Tehnika**

3, Eng. Felix Vozhely St.,
6100 Kazanlak, Bulgaria
Tel.: +359 431 62 228
+359 431 68 440
e-mail: info@hpt-bg.com
www.hpt-bg.com

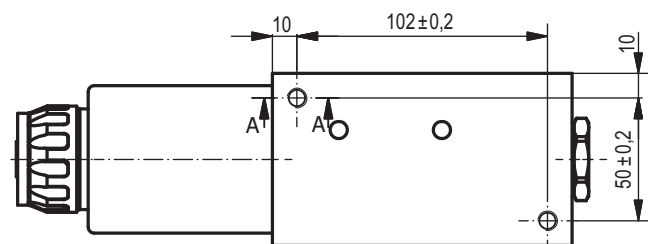
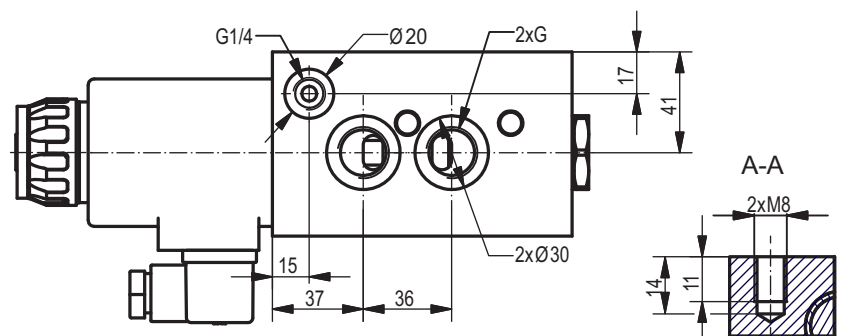
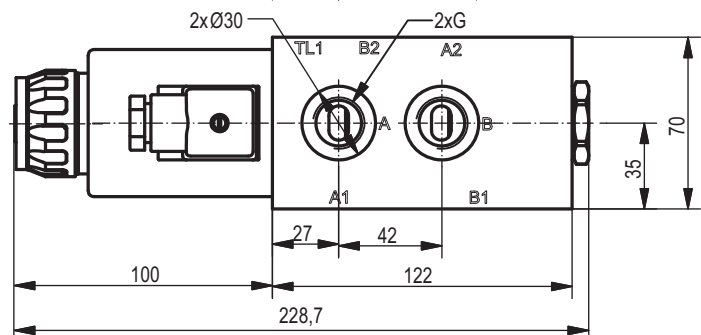
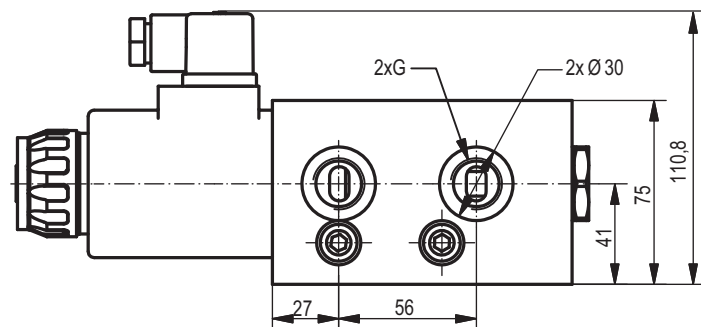
HYDRAULIC MOTOR BLOCKS TYPE BD



BD 1216/...



This block controls the work of the hydraulic motor either in parallel or serial connection. This is realized by an electric signal applied to the solenoid.



Type	Max. flow rate	P _{max.} bar	Opening pressure of the check valve bar	Operating voltage	Consumed power W	Port threads G
	L/min					
BD 1216/12	100	210	0,5	12 V DC	≤36	G1/2 - DIN 3852
BD 1216/24	100	210	0,5	24 V DC	≤36	G1/2 - DIN 3852

ORDERING CODE

BD 12 16 / 12

Type

Port threads G - code:
G1/2 - **12**

Scheme code:
16

Operating voltage - code
12V / 00Hz - **12**
24V / 00Hz - **24**