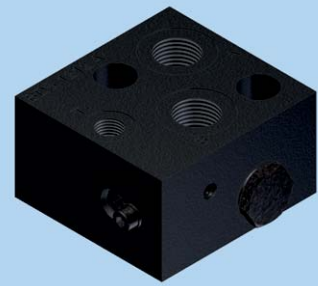




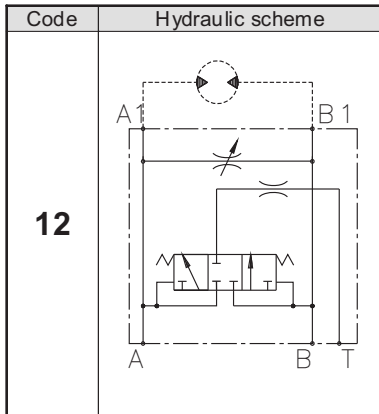
**Hidro
Pnevmo
Tehnika**

3, Vojeli St., Kazanlak, Bulgaria
 Tel.: +359 431/62 228
 Fax.: +359 431/62 019
 e-mail: info@hpt-bg.com
www.hpt-bg.com

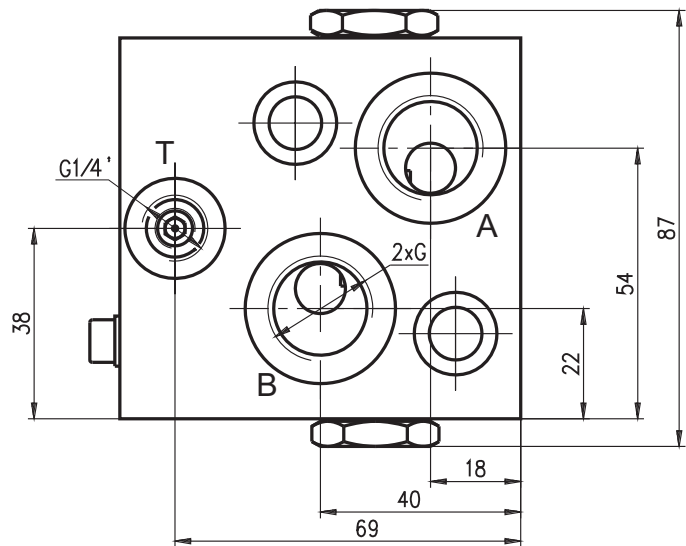
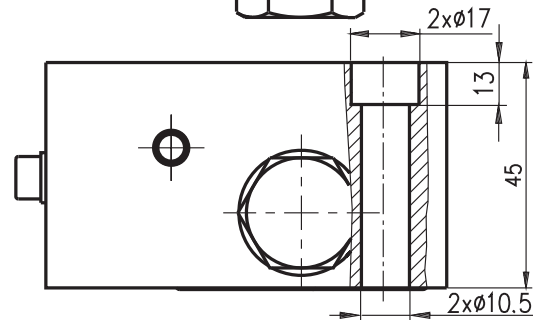
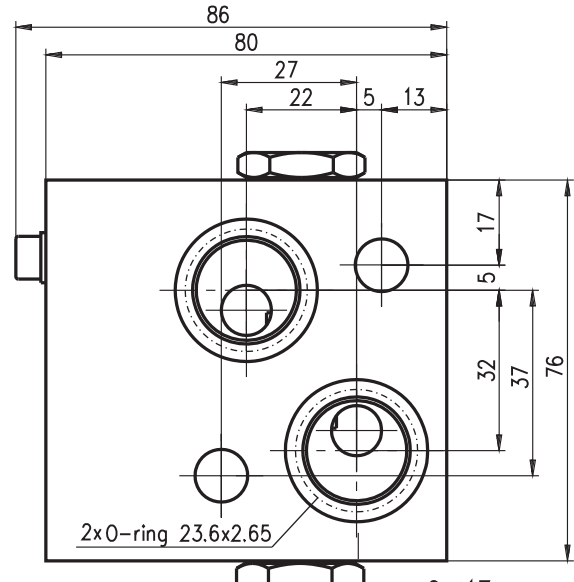
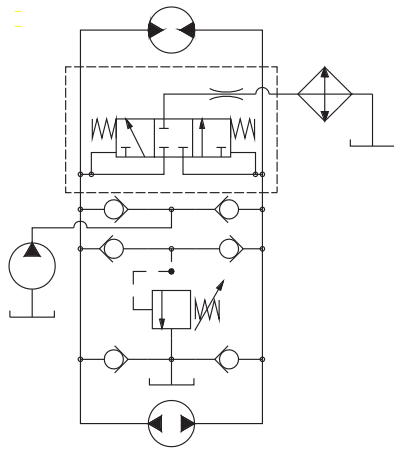
HYDRAULIC MOTOR BLOCKS TYPE BD



BDS 1212A



The block is used in closed hydraulic systems to separate flow for cooling. It is connected according to the enclosed hydraulic design.



| Type | Nom. flow rate | Pnom. | Port threads G |
|------------------|----------------|-------|-----------------|
| | L/min | bar | - |
| BDS 1212A | 40 | 210 | G1/2 - DIN 3852 |

ORDERING CODE

