
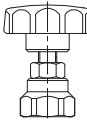
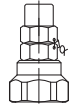
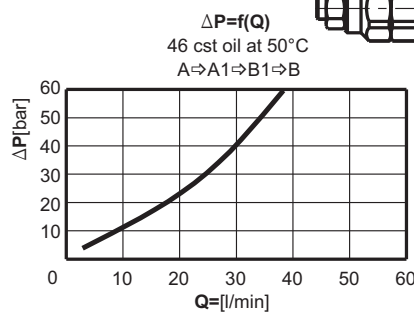


Pressure range			
Code	Standard setting (Q=5l/min)		Colour
	bar	Adj. pressure range	
<b>10</b>	80	10...100	White
<b>25</b>	180	30...250	Yellow

Code	Adjustment
<b>A</b>	Leakproof hex. socket screw 
<b>B</b>	Handknob and locknut 
<b>C</b>	Sealing cap 



Type	Nom. flow rate	P <sub>max.</sub>	Port threads G
	L/min	bar	-
<b>BVS 1204 /... -...</b>	50	250	G1/2 - DIN 3852

**ORDERING CODE**

**BV S 12 04 / A10 A - B25 A**

