



**Hidro
Pnevmo
Tehnika**

3, Vojeli St., Kazanlak, Bulgaria
Tel.: +359 431/ 62 228, 68 440
e-mail : info@hpt-bg.com
www.hpt-bg.com

IN-LINE SINGLE OVERCENTER VALVE

OWC/SE- 38/..M1L

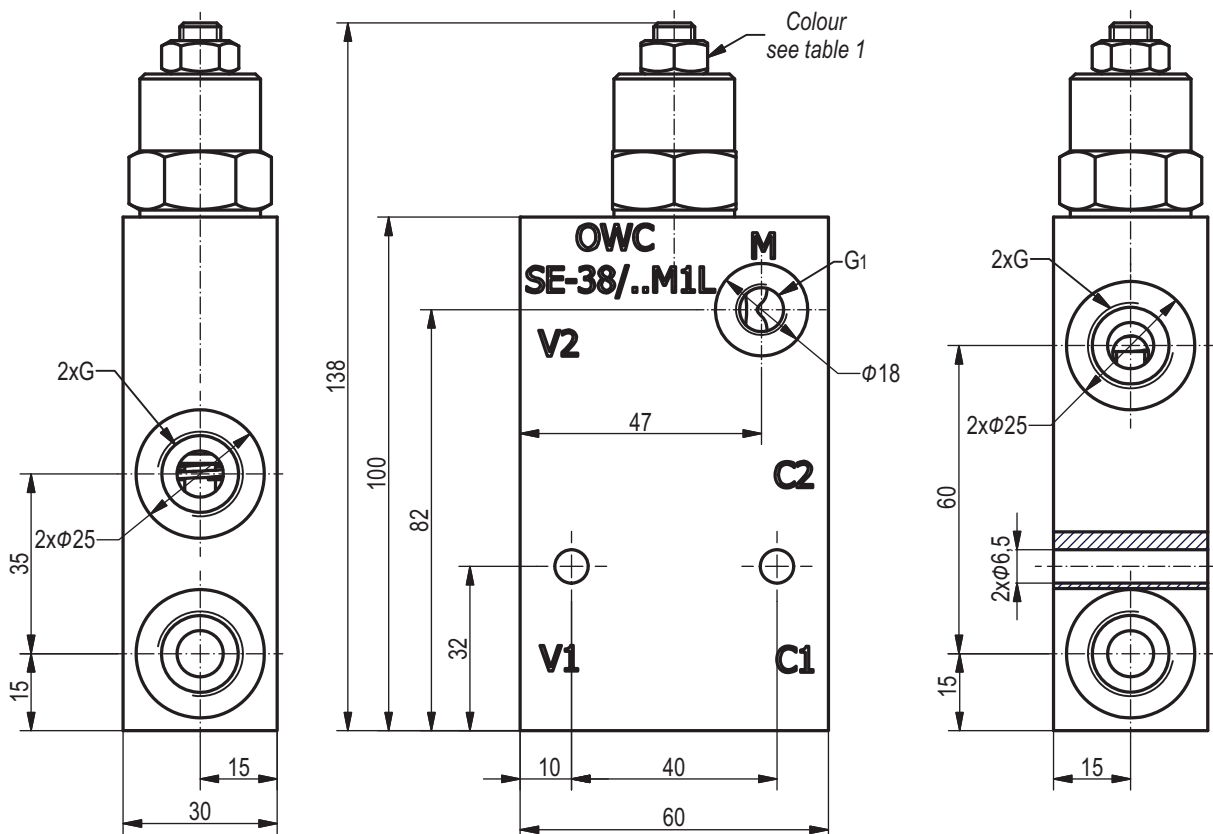
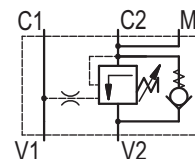
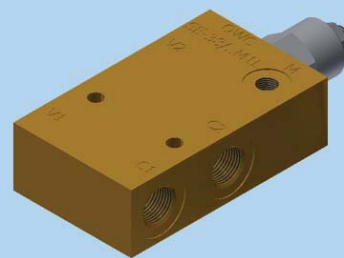


Table 1

Pressure range				
Code	Standard setting (Q=5l/min)	Adj. pressure range	Pilot ratio	Colour
	bar	bar	-	-
25	100	60...250	4,26:1	White
35	250	100...350	4,26:1	Yellow

Table 2

Type	Q _{nom.}	G	G ₁	Body material
	L/min.	-	-	-
OWC/SE-38/25M1L	30	G3/8"-DIN 3852	G 1/8"-DIN 3852	Brass
OWC/SE-38/35M1L	30	G3/8"-DIN 3852	G 1/8"-DIN 3852	Brass

All performances and calibration are carried out by using hydraulic oil with viscosity approx. 46 cSt at 50°C.

Working fluid - mineral oil with:
 - viscosity - 10...100 cSt;
 - temperature - -20...+80°C;
 - filtration level - 25 μ m.

ORDERING CODE

OWC/SE - 38 / 25 M1 L

